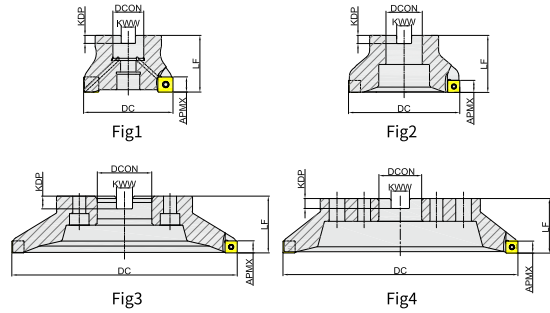
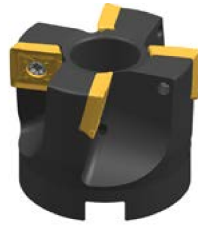


Shoulder Milling

MES190

Arbor



Sparse Pitch

Ordering Code	Dia-meter	Teeth	Dimension(mm)					APMX	Coolant	Suitable for	Shape	Stock
			DC	DCON	LF	KWW	KDP					
MES190050R04A22SD14	50	4	50	22	40	10.4	6.3	10	✓	SDKT14T3	Fig1	●
MES190063R05A22SD14	63	5	63	22	40	10.4	6.3	10	✓	SDKT14T3	Fig1	●
MES190080R06A27SD14	80	6	80	27	50	12.4	7	10	✓	SDKT14T3	Fig1	●
MES190100R07B32SD14	100	7	100	32	50	14.4	8	10	×	SDKT14T3	Fig2	●
MES190125R08B40SD14	125	8	125	40	63	16.4	9	10	×	SDKT14T3	Fig2	●
MES190160R08C40SD14	160	8	160	40	63	16.4	9	10	×	SDKT14T3	Fig3	○
MES190200R10C60SD14	200	10	200	60	63	25.7	14	10	×	SDKT14T3	Fig3	●
MES190250R12C60SD14	250	12	250	60	63	25.7	14	10	×	SDKT14T3	Fig3	○
MES190315R15D60SD14	315	15	315	60	80	25.7	14	10	×	SDKT14T3	Fig4	○

● Stock ○ Available Upon Order

Dense Pitch

Ordering Code	Dia-meter	Teeth	Dimension(mm)					APMX	Coolant	Suitable for	Shape	Stock
			DC	DCON	LF	KWW	KDP					
MES190050R05A22SD14	50	5	50	22	40	10.4	6.3	10	✓	SDKT14T3	Fig1	●
MES190063R06A22SD14	63	6	63	22	40	10.4	6.3	10	✓	SDKT14T3	Fig1	●
MES190080R08A27SD14	80	8	80	27	50	12.4	7	10	✓	SDKT14T3	Fig1	●
MES190100R08B32SD14	100	8	100	32	50	14.4	8	10	×	SDKT14T3	Fig2	●
MES190125R10B40SD14	125	10	125	40	63	16.4	9	10	×	SDKT14T3	Fig2	●
MES190160R12C40SD14	160	12	160	40	63	16.4	9	10	×	SDKT14T3	Fig3	●
MES190200R16C60SD14	200	16	200	60	63	25.7	14	10	×	SDKT14T3	Fig3	●
MES190250R18C60SD14	250	18	250	60	63	25.7	14	10	×	SDKT14T3	Fig3	○
MES190315R24D60SD14	315	24	315	60	80	25.7	14	10	×	SDKT14T3	Fig4	○

● Stock ○ Available Upon Order