

Shoulder Milling

# MEB190

Arbor

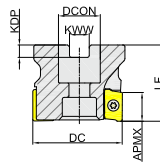
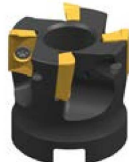


Fig1

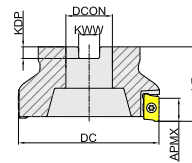


Fig2

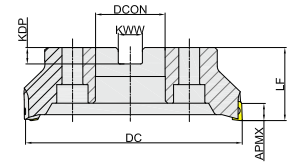


Fig3

Ordering Code	Dia-meter	Teeth	Dimension(mm)					APMX	Suitable for	Coolant	Shape	Stock
			DC	DCON	LF	KWW	KDP					
MEB190040R05A16AP11	40	5	40	16	40	8.4	5.6	9	APK(E)T1135	✓	Fig1	●
MEB190050R04A22AP16	50	4	50	22	40	10.4	6.3	14	APK(E)T1604	✓	Fig1	●
MEB190050R07A22AP11	50	7	50	22	40	10.4	6.3	9	APK(E)T1135	✓	Fig1	●
MEB190063R05A22AP16	63	5	63	22	40	10.4	6.3	14	APK(E)T1604	✓	Fig1	●
MEB190063R07A22AP11	63	7	63	22	40	10.4	6.3	9	APK(E)T1135	×	Fig1	●
MEB190080R07A27AP16	80	7	80	27	50	12.4	7	14	APK(E)T1604	✓	Fig1	●
MEB190080R08A27AP11	80	8	80	27	50	12.4	7	9	APK(E)T1135	✓	Fig1	●
MEB190100R08A32AP16	100	8	100	32	50	14.4	8	14	APK(E)T1604	✓	Fig1	●
MEB190100R12B32AP11	100	12	100	32	63	14.4	8	9	APK(E)T1135	✓	Fig2	●
MEB190125R06B40AP16	125	6	125	40	63	16.4	9	14	APK(E)T1604	×	Fig2	●
MEB190125R09B40AP16	125	9	125	40	63	16.4	9	14	APK(E)T1604	×	Fig2	●
MEB190125R11B40AP11	125	11	125	40	63	16.4	9	9	APK(E)T1135	×	Fig2	●
MEB190160R10C40AP16	160	10	160	40	63	16.4	9	14	APK(E)T1604	×	Fig3	●
MEB190200R12C60AP16	200	12	200	60	63	25.7	13	14	APK(E)T1604	×	Fig3	●

● Stock ○ Available Upon Order