

Shoulder Milling

MEC190

Arbor

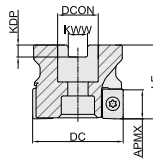


Fig1

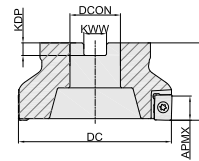


Fig2

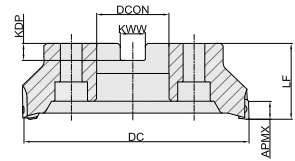


Fig3

Ordering Code	Dia-meter	Teeth	Dimension(mm)					APMX	Suitable for	Coolant	Shape	Stock
			DC	DCON	LF	KWW	KDP					
MEC190050R04A22AN12	50	4	50	22	40	10.4	6.3	9	ANKX1207	✓	Fig1	●
MEC190050R04A22AN16	50	4	50	22	40	10.4	6.3	14	ANKX1607	✓	Fig1	●
MEC190063R05A22AN12	63	5	63	22	40	10.4	6.3	9	ANKX1207	✓	Fig1	●
MEC190063R05A22AN16	63	5	63	22	40	10.4	6.3	14	ANKX1607	✓	Fig1	●
MEC190080R05A27AN16	80	5	80	27	50	12.4	7	14	ANKX1607	✓	Fig1	●
MEC190080R06A27AN16	80	6	80	27	50	12.4	7	14	ANKX1607	✓	Fig1	●
MEC190100R07B32AN16	100	7	100	32	50	14.4	8	14	ANKX1607	×	Fig2	●
MEC190100R08B32AN16	100	8	100	32	50	14.4	8	14	ANKX1607	×	Fig2	●
MEC190125R10B40AN16	125	10	125	40	63	16.4	9	14	ANKX1607	×	Fig2	●
MEC190160R12C40AN16	160	12	160	40	63	16.4	9	14	ANKX1607	×	Fig3	●
MEC190200R14C60AN16	200	14	200	60	63	25.7	14	14	ANKX1607	×	Fig3	●

● Stock ○ Available Upon Order

MEC190

Side Clamp Type

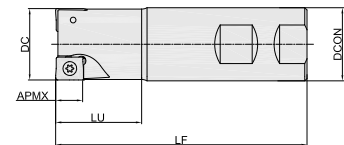


Fig4

Ordering Code	Dia-meter	Teeth	Dimension(mm)				APMX	Suitable for	Coolant	Shape	Stock
			DC	DCON	LF	LU					
MEC190032R02W32AN12	32	2	32	32	110	40	9	ANKX1207	×	Fig4	●
MEC190032R02W32AN16	32	2	32	32	150	40	14	ANKX1607	×	Fig4	●
MEC190032R02W32AN16L	32	2	32	32	200	54	14	ANKX1607	×	Fig4	●
MEC190032R03W32AN16	32	3	32	32	150	40	14	ANKX1607	×	Fig4	●
MEC190032R03W32AN16L	32	3	32	32	200	56	14	ANKX1607	×	Fig4	●
MEC190040R03W32AN12	40	3	43	32	130	40	9	ANKX1207	✓	Fig4	●
MEC190040R03W32AN16	40	3	40	32	150	47	14	ANKX1607	✓	Fig4	●

● Stock ○ Available Upon Order